



ARCHITECT'S PERSPECTIVE

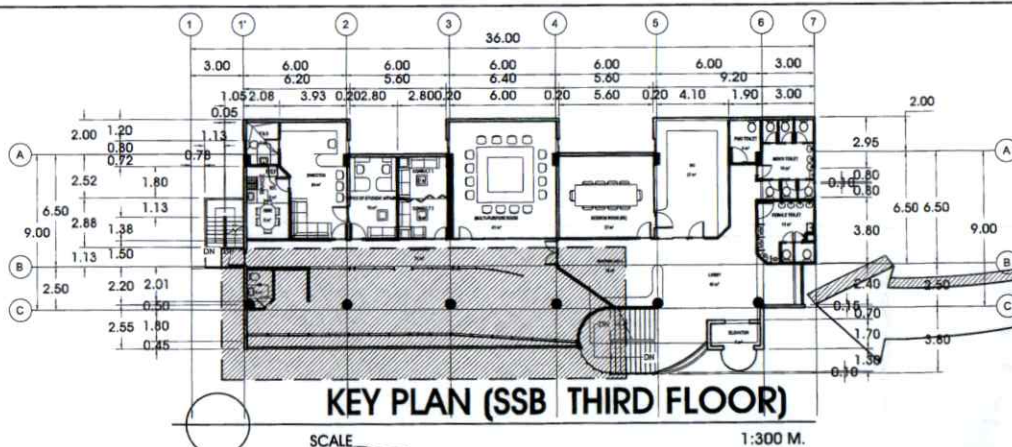


TABLE OF CONTENTS

ARCHITECTURAL

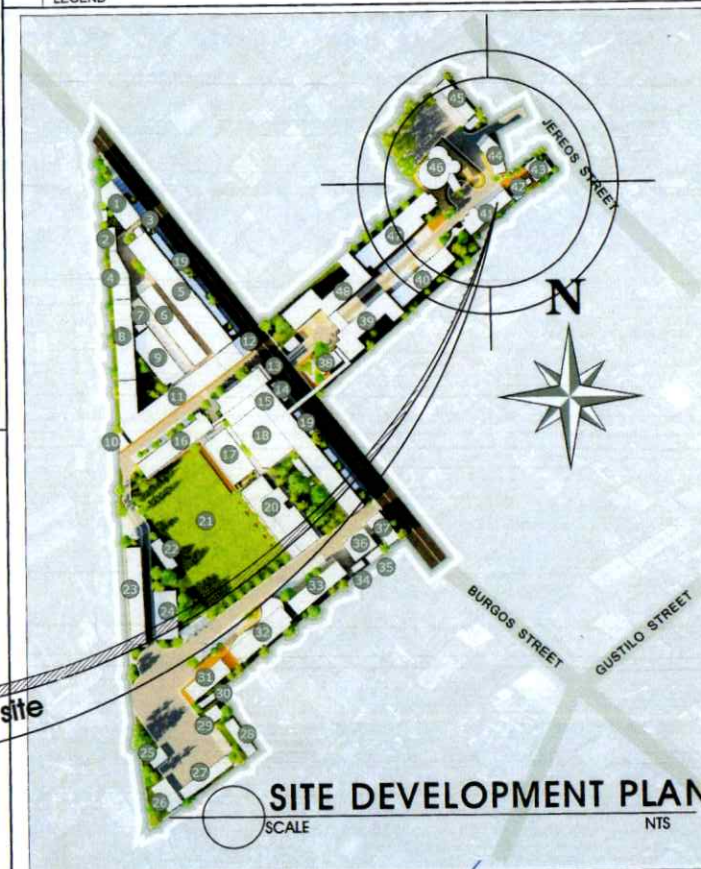
CS1
1/3
ARCHITECT'S PERSPECTIVE
SITE DEVELOPMENT PLAN
KEY PLAN
TABLE OF CONTENTS

ARCHITECTURAL

A1
2/3
MODULAR LOW PARTITION DETAIL
BLOW-UP DETAIL OF CUBICLE
FURNITURE SPECIFICATIONS

ELECTRICAL

E1
3/3
EXISTING POWER LAYOUT
GENERAL NOTES AND ELECTRICAL SPECIFICATIONS
LEGEND



DONE IN THE OFFICE OF:



ILOILO SCIENCE AND TECHNOLOGY UNIVERSITY
**PLANNING DEVELOPMENT &
AUXILIARY SERVICES**
BURGOS ST., LA PAZ, ILOILO CITY

DESIGN BY:

NICOLE M. JANAPON
PROJECT DEVELOPMENT OFFICER

PTR NO.: 8707906
ISSUED ON: 01-03-2025
ISSUED AT: ILOILO CITY

REQUESTED AND CONFORMED BY:

DR. EMILY A. DELA CRUZ
DIRECTOR, OSAS

NOTE

ALL DESIGNS, DRAWINGS, SPECIFICATIONS & COPIES PREPARED AND FORWARDED BY THE ARCHITECT IN CONNECTION WITH THE PROJECT ARE INSTRUMENTS OF PROFESSIONAL SERVICE. THEY ARE THE PROPERTY OF THE ARCHITECT. WITHOUT THEIR BEING APPROVED OR USED IN OTHER WORK EXCEPT IF WRITTEN AGREEMENT WITH THE ARCHITECT.

PROJECT TITLE:

**SUPPLY AND INSTALLATION OF
WORKSTATIONS AT UNIVERSITY
GUIDANCE CENTER**

LOCATION: 3RD FLOOR SSB, 156AT U/ILOILO CITY CAMPUS
LA PAZ, ILOILO CITY

RECOMMENDING APPROVAL:

DR. SAMMY A. DAITAO
DIRECTOR, PDAS

APPROVED BY:

DR. RUSS ALLEN B. NAPUD
VP FOR ADMIN. & FINANCE

APPROVED BY:

DR. GABRIEL M. SALISTRE JR.
SUC PRESIDENT III

SHEET CONTENTS:

ARCHITECT'S PERSPECTIVE
VICTORY MAP
KEY PLAN
TABLE OF CONTENTS
DRAWN BY:
DATE START:
DATE FINISH:
REV. NO.:

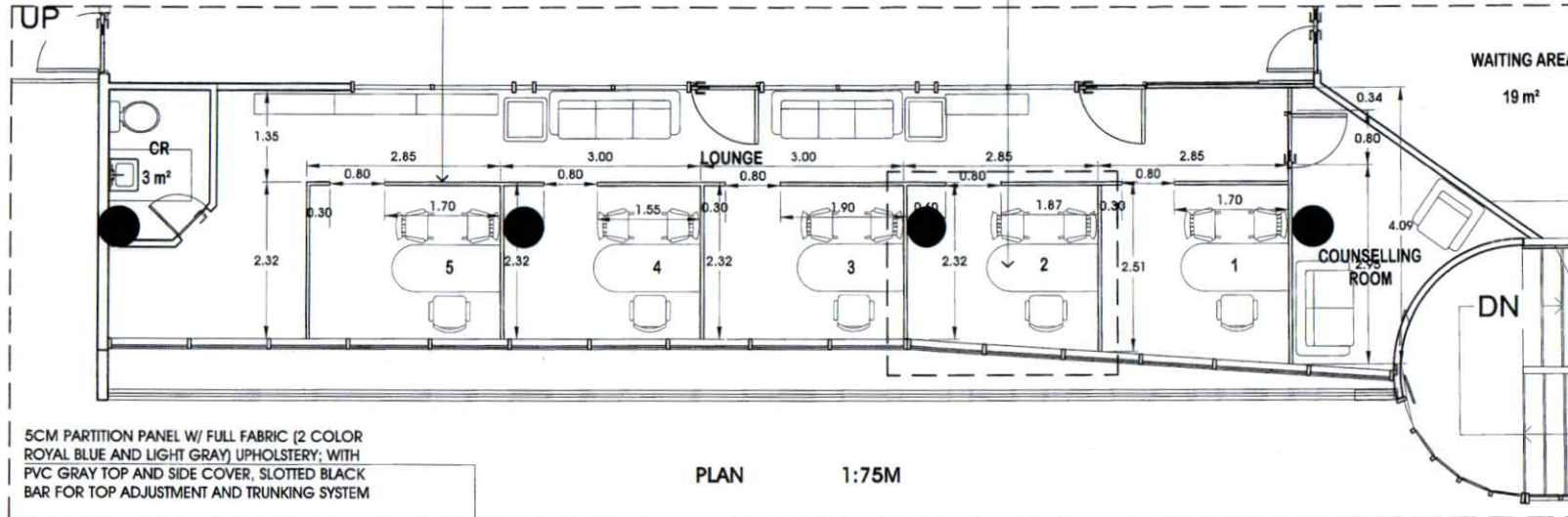
SHEET NO.

CS 1

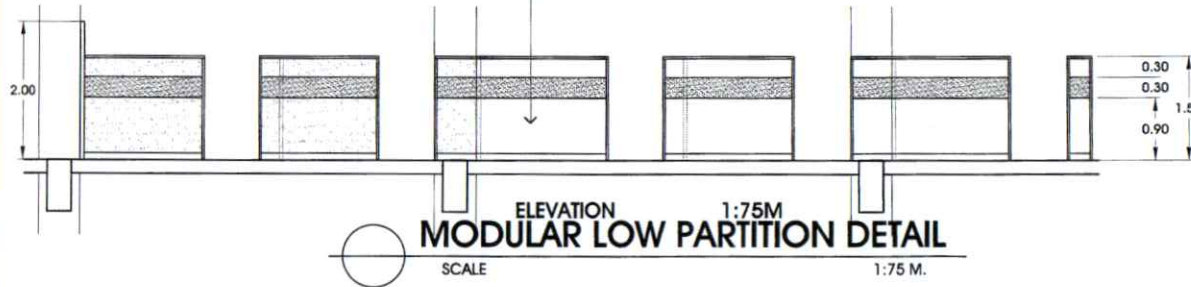
SHEET 1 OF 3

5CM PARTITION PANEL W/ FULL FABRIC (2 COLOR ROYAL BLUE AND LIGHT GRAY) UPHOLSTERY; WITH PVC GRAY TOP AND SIDE COVER, SLOTTED BLACK BAR FOR TOP ADJUSTMENT AND TRUNKING SYSTEM

SEE BLOW-UP DETAIL

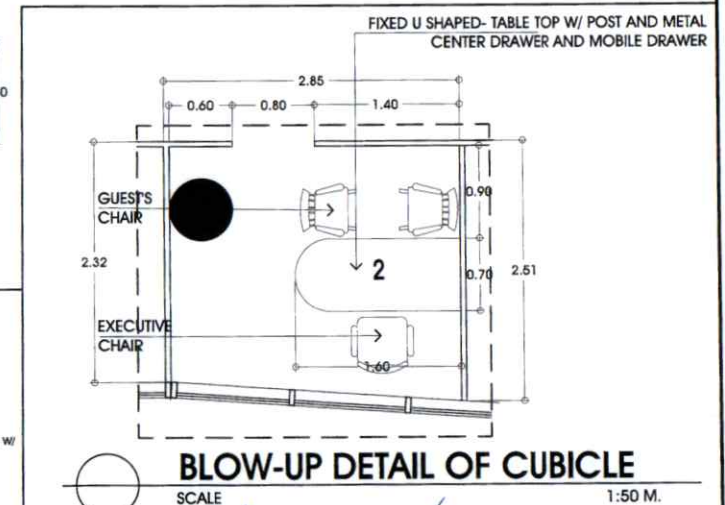


PLAN 1:75M



ELEVATION 1:75M
MODULAR LOW PARTITION DETAIL

SCALE 1:75 M.



BLOW-UP DETAIL OF CUBICLE

SCALE 1:50 M.

FURNITURE SPECIFICATIONS



EXECUTIVE CHAIR W/ ADJUSTABLE ARM AND HEAD REST, GASUFT AND TILTING MECHANISM; CHROME COATED BASE W/ CASTERS STEEL FINISH; FABRIC MESH UPHOLSTERY SEAT AND BACK W/ HIGH DENSITY FOAM SEATREST COLOR:BLACK



GUEST CHAIR W/ ARM REST; SLED TYPE METAL FRAME IN CHROME FINISH; FABRIC MESH UPHOLSTERY SEAT AND BACK W/ HIGH DENSITY FOAM SEATREST COLOR:BLACK



FIXED U SHAPED- TABLE TOP W/ POST; 30MM THK TOP WOOD GRAIN FINISH (DARK WALNUT) D: W160CM X D70CM



GA 22 GI SHEET IN POWDER COATED FINISH METAL CENTER DRAWER TO BE ATTACHED TO TABLE TOP; W/ LOCK AND KEYS DIVISION X DADCM X H10CM COLOR: GRAY

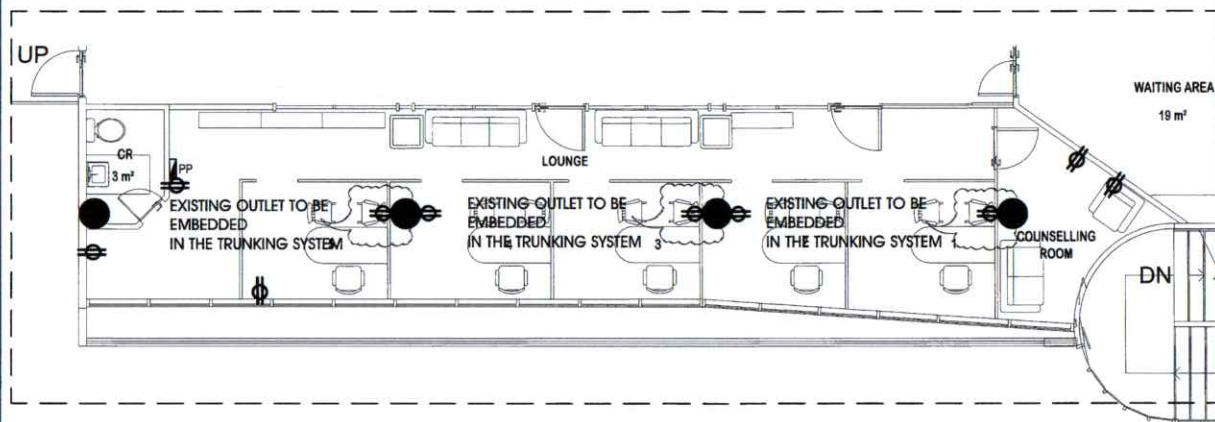


METAL MOBILE DRAWER W/ 3 DRAWERS IN CENTRALIZED LOCK; PP PLASTIC TOP AND GA 22 GI SHEET POWDER-COATED METAL FRAME; W/ PENCIL HOLDER & PLASTIC DIVIDER D: W40CM X D56CM X H66CM COLOR: GRAY

DONE IN THE OFFICE OF:	DESIGN BY:	REQUESTED AND CONFORMED BY:	NOTE:	PROJECT TITLE:	RECOMMENDING APPROVAL:	APPROVED BY:	SHEET CONTENTS:	SHEET NO.
<p>ILOILO SCIENCE AND TECHNOLOGY UNIVERSITY PLANNING DEVELOPMENT & AUXILIARY SERVICES BURGOS ST., LA PAZ, ILOILO CITY</p>	<p>NICOLE M. JANAPON PROJECT DEVELOPMENT OFFICER/IT</p> <p>PTH NO.: 8701608 RNL NO.: 35363 ISSUED ON: 01-03-2025 T.I.N.: 437-964-835 ISSUED AT: ILOILO CITY</p>	<p>DR. EMILY A. DELA CRUZ DIRECTOR, O&AS</p>	<p>ALL DESIGNS, DRAWINGS, SPECIFICATIONS & COPIES PREPARED AND FORWARDED BY THE ARCHITECT IN CONNECTION WITH THE PROJECT ARE THE INSTRUMENTS OF PROFESSIONAL SERVICE. THEY ARE THE PROPERTY OF THE ARCHITECT. WHETHER THEY ARE EXECUTED OR NOT, THEY ARE NOT TO BE REPRODUCED OR USED IN OTHER WORK EXCEPT IF WRITTEN AGREEMENT WITH THE ARCHITECT.</p> <p>RA 9266, ART. 6, SEC. 3</p>	<p>SUPPLY AND INSTALLATION OF WORKSTATIONS AT UNIVERSITY GUIDANCE CENTER</p> <p>LOCATION: 3RD FLOOR 55A, 55AT U ILOILO CITY CAMPUS LA PAZ, ILOILO CITY</p>	<p>DR. SAMMY A. DAITAO DIRECTOR, O&AS</p>	<p>DR. RUSS ALLEN B. NAPUD VP FOR ADMIN. & FINANCE</p> <p>DR. GABRIEL M. SALISTRÉ, JR. SUC PRESIDENT III</p>	<p>MODULAR LOW PARTITION DETAIL BLOW-UP DETAIL OF CUBICLE FURNITURE SPECIFICATIONS</p> <p>DRAWN BY: DATE START: DATE FINISH: REV. NO.:</p>	<p>A 1 1 SHEET 2 OF 3</p>

LEGEND:

	SERVICE ENTRANCE
	KILOWATT-HOUR METER
	POWER PANELBOARD
	(MCCB) MOULDED CASE CIRCUIT BREAKER
	(MCB) MINATURE CIRCUIT BREAKER
	CIRCUIT HOMERUN
	18W, 230V, LED TUBE LUMINAIRE
	15A, 230V, 3PIN, UNIVERSAL DUPLEX CONVENIENCE OUTLET, (350mm AFF.)
	15A, 230V, 3PIN, UNIVERSAL DUPLEX CONVENIENCE OUTLET, WEATHERPROOF TYPE
	15A, 230V, 3PIN, UNIVERSAL DUPLEX CONVENIENCE OUTLET, WITH GROUND FAULT CURRENT INTERRUPTER
	20A, 230V, 3PIN, REFRIGERATOR OUTLET
	85W, 230V, WALL MOUNTED OSCILLATING FAN
	20A, 230V, 3 PIN, AIR CONDITIONING UNIT OUTLET
	16A, 230V, SINGLE POLE 1-WAY SWITCH
	16A, 230V, 2 GANG 1-WAY SWITCH
	16A, 230V, 3 GANG 1-WAY SWITCH
	16A, 230V, 1 GANG 3-WAY SWITCH
	16A, 230V, 2 GANG 3-WAY SWITCH
	BONDING/GROUNDING PROTECTION ON EARTH



EXISTING POWER LAYOUT

SCALE

1:100 M.

GENERAL NOTES & ELECTRICAL SPECIFICATIONS

E.1 ALL ELECTRICAL WORKS INDICATED HEREIN ARE DONE IN ACCORDANCE WITH THE LATEST EDITION OF THE PHILIPPINE ELECTRICAL CODE, THE RULES AND REGULATIONS OF THE LOCAL ENFORCING AUTHORITIES (CITY/MUNICIPALITY), THE REQUIREMENTS OF THE BUILDING ADMINISTRATION, AND THE TECHNICAL SPECIFICATIONS FOR ELECTRICAL WORKS OF THIS PROJECT.

E.2 POWER SOURCE IS 230V, 1 PHASE, 60 HZ, 2 WIRES + GROUND.

E.3 ALL CONCEALED INSTALLATION IN CEILING VOIDS OR EXPOSED ON CEILING & WALL FABRICS ARE MADE WITH IMC OR METAL CONDUITS, AND IN RIGID PVC CONDUITS EMBEDDED IN CONCRETE WALLS OR SLABS. MINIMUM SIZE OF CONDUIT IS NOT BE LESS THAN 20mm Ø.

E.4 UNLESS OTHERWISE INDICATED ON THE DRAWINGS, MINIMUM SIZE OF CONDUCTOR FOR LIGHTING CIRCUITS SHALL BE 2.0mm² THHN CU., AND 3.5mm² THHN CU. FOR SMALL POWER SOCKET OUTLETS.

E.5 ALL CIRCUIT BREAKERS UNLESS OTHERWISE SPECIFICALLY INDICATED IN THE DRAWINGS SHALL BE BOLT-ON TYPE WITH THERMAL MAGNETIC TRIPPING MECHANISM AND COMMON TRIPPING ACTION. RATING AND POLES ARE INDICATED IN THE SCHEDULE OF LOADS.

E.6 ALL ELECTRICAL MATERIALS AND EQUIPMENT TO BE USED SHALL BE NEW AND APPROVED TYPE FOR THE SPECIFIC PURPOSE.

E.7 USE CIRCUIT BREAKERS WITH TYPE-C CURVE FOR GENERAL USE AND TYPE-D CURVE FOR MOTORS.

E.8 ALL CONVENIENCE SOCKETS ARE 3 PIN, WITH GROUND TERMINAL, AND TAMPER RESISTANT.

E.9 ALL PANELBOARDS ARE WITH CENTER MAIN CIRCUIT BREAKER, AND ARE FLUSH MOUNTED IN THE WALL UNLESS OTHERWISE REQUIRED AS PER SITE CONDITION TO BE SURFACE MOUNTED.

E.10 ALL ELECTRICAL EQUIPMENT, MOTORS, ELECTRIC PUMPS, AND METAL ENCLOSURES SHALL BE BONDED WITH GROUNDING PROTECTIVE CONDUCTOR, METAL CABLE TRAY, TRUNKING, AND LADDERS SHALL BE BONDED AT THE TERMINATED ENDS TO THE EQUIPMENT AND PANELS. ALL JOINTS AND FITTINGS SHALL BE PROVIDED WITH BONDING CONDUCTOR JUMPERS.

E.11 ALL CONDUCTORS INSULATION SHALL BE COLOR CODED AS FOLLOWS:

FOR 1 PHASE (LINE TO LINE/GROUND): PHASES- SAME COLOR;
GROUND - YELLOW/GREEN OR GREEN

E.12 MOUNTING HEIGHT OF WIRING DEVICES & SERVICE EQUIPMENT UNLESS OTHERWISE SPECIFIED, SHALL BE AS FOLLOWS:

LIGHT SWITCHES - 1400mm ABOVE F.F.L.
AIRCON / FAN SWITCHES - 1400mm ABOVE F.F.L.
CONVENIENCE OUTLETS - 400mm ABOVE F.F.L.
CONVENIENCE OUTLETS (COUNTER HEIGHT) - 200mm ABOVE COUNTER

SAFETY POWER SWITCHES - 1500mm ABOVE F.F.L.
PANELBOARDS - 1800mm MEASURED FROM TOP OF LEVEL TO THE FINISH FLR.

E.13 ALL ELECTRICAL WORKS ARE DONE UNDER THE DIRECT AND IMMEDIATE SUPERVISION OF DULY QUALIFIED LICENSED ELECTRICAL ENGINEER OR A MASTER ELECTRICIAN.

DONE IN THE OFFICE OF:

ILOILO SCIENCE AND TECHNOLOGY UNIVERSITY
PLANNING DEVELOPMENT & AUXILIARY SERVICES
BURGOS ST., LA PAZ, ILOILO CITY

DESIGN BY:

ARIEL A. SAMPANO

AO / SUPERVISING ENGINEER

PTR NO.: 8203447 REG. NO.: 3460
ISSUED ON: 01-03-2025 T.J.N.: 167-299-341
ISSUED AT: OTON, ILOILO

REQUESTED AND CONFORMED BY:

DR. EMILY A. DELA CRUZ

DIRECTOR, OSG

NOTE
ALL DESIGNS, DRAWINGS, SPECIFICATIONS & COPIES PREPARED AND FORWARDED BY THE ARCHITECT IN CONNECTION WITH THE PROJECT ARE INSTRUMENTS OF PROFESSIONAL SERVICE. THEY ARE THE PROPERTY OF THE ARCHITECT. WHETHER THEY ARE EXECUTED OR NOT, THEY ARE NOT TO BE REPRODUCED OR USED ON OTHER WORK EXCEPT IF WRITTEN AGREEMENT WITH THE ARCHITECT.
RA 9266, ART 4, SEC 33

PROJECT TITLE:

SUPPLY AND INSTALLATION OF WORKSTATIONS AT UNIVERSITY GUIDANCE CENTER

LOCATION: 3RD FLOOR 558, 1ST U ILOILO CITY CAMPUS
LA PAZ, ILOILO CITY

RECOMMENDING APPROVAL:

DR. SAMMY A. DAITAO

DIRECTOR, POAS

DR. RUSS ALLEN B. NAPUD

VP FOR ADMIN. & FINANCE

APPROVED BY:

DR. GABRIEL M. SALISTRE JR.

SUC PRESIDENT III

SHEET CONTENTS:

1

E

1

DRAWN BY:

DATE START:

DATE FINISH:

REV. NO.:

SHEET NO.:

1

1

1

1

1

1

1

1

1

1

1

1

1

1

1

1

1